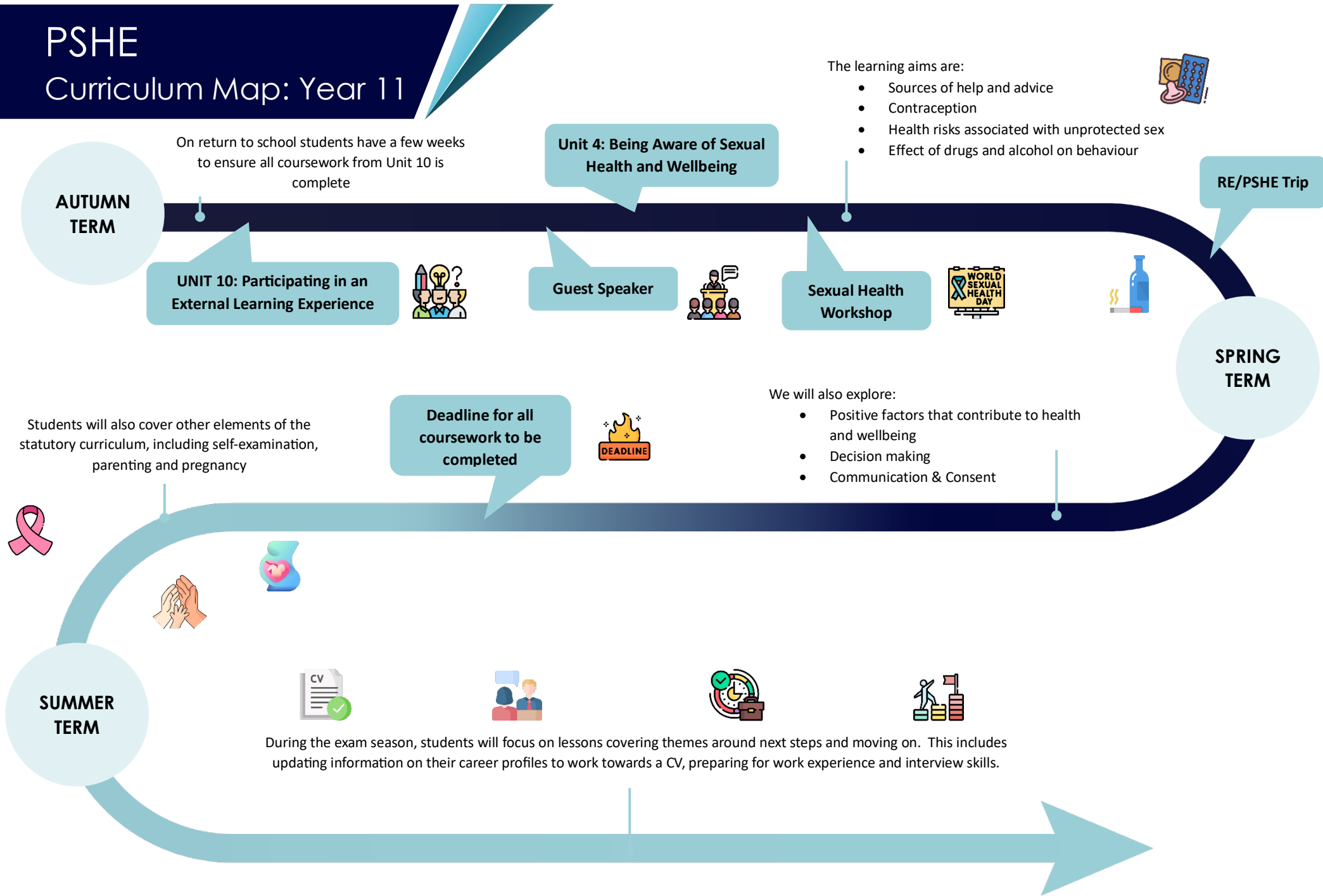


PSHE Curriculum Map: Year 11



The learning aims are:

- Sources of help and advice
- Contraception
- Health risks associated with unprotected sex
- Effect of drugs and alcohol on behaviour



Unit 4: Being Aware of Sexual Health and Wellbeing

RE/PSHE Trip

On return to school students have a few weeks to ensure all coursework from Unit 10 is complete

AUTUMN TERM

UNIT 10: Participating in an External Learning Experience



Guest Speaker



Sexual Health Workshop



SPRING TERM

We will also explore:

- Positive factors that contribute to health and wellbeing
- Decision making
- Communication & Consent

Deadline for all coursework to be completed



Students will also cover other elements of the statutory curriculum, including self-examination, parenting and pregnancy



SUMMER TERM



During the exam season, students will focus on lessons covering themes around next steps and moving on. This includes updating information on their career profiles to work towards a CV, preparing for work experience and interview skills.