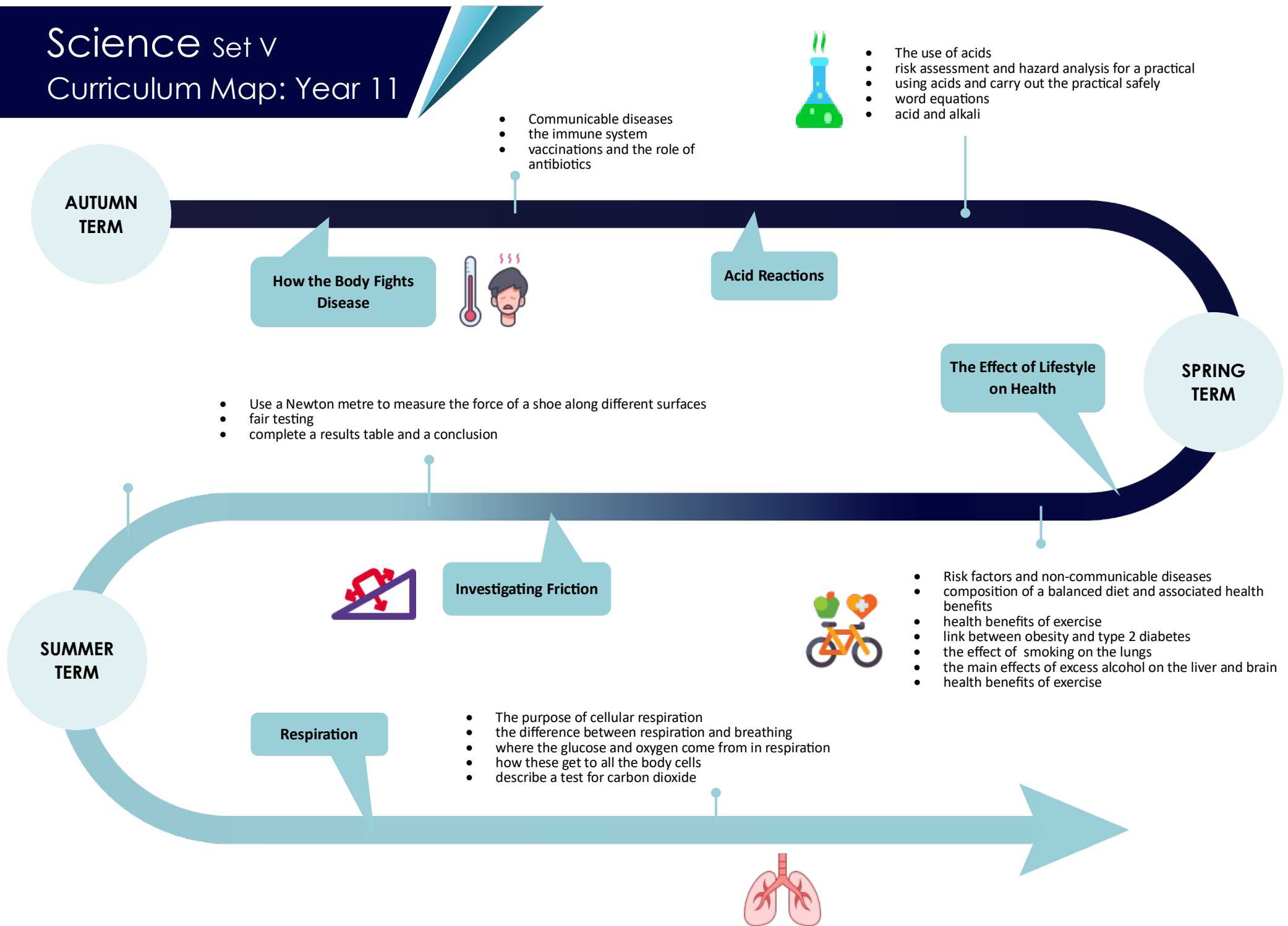


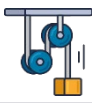
# Science set v

## Curriculum Map: Year 11



# Science Sets W, X Curriculum Map: Year 11

**AUTUMN TERM**

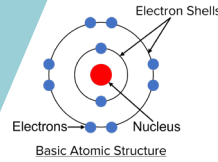


## Forces, Movement & Energy



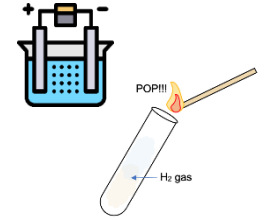
- Contact and non-contact forces
- Speed, acceleration and stopping distances
- Energy transfer
- Renewable and finite energy sources
- Edexcel ELC Physics 1A assessment

## Atoms, Compounds and the States of Matter



- Structure of the atom
- History of the periodic table
- Chemical bonding
- States of matter
- Edexcel ELC Chemistry 1A assessment

## Separating Mixtures, Breaking Down Substances, Acids and Metals



- Separation techniques
- Electrolysis
- Reactions of acids with metals
- Extraction of metals
- Testing for gases
- Edexcel ELC Chemistry 1B assessment

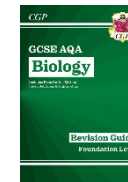
**SPRING TERM**

In the Autumn term pupils who would like to be considered for the GCSE exam, and have shown through their Entry Level work that GCSE may be accessible to them, will sit a mock.

## Digestive System: GCSE or ELC



## Plants: GCSE or ELC



## GCSE Biology REVISION or ELC

## Respiration: GCSE or ELC



- Structure of lungs
- Adaptations of lungs
- Aerobic respiration
- Anaerobic respiration

- Pathway of food during digestion
- Adaptation of the digestive system
- Enzymes in Digestion
- Testing for food groups

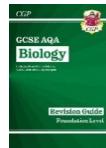
- Photosynthesis
- Structure of the leaf
- Adaptations in plants
- Transpiration and Translocation

In the spring term, some pupils will be RESET according to their accreditation pathway.

**Y & Z: Trilogy GCSE (all sciences)**  
**X: Biology GCSE**  
**W: Entry Level Certificate pathway**  
**V: Unit Award Scheme**

**SUMMER TERM**

## Set X: GCSE Biology REVISION



- GCSE Biology Pupils continue with their revision work
- Pupils repeat required practicals and practice exam questions.
- Pupils are encouraged to study at home

## Set W: Clean Air and Water



- Evolution of the atmosphere
- Global Warming
- Air pollution
- Water treatment

## Set W: Alternative Energy



- Finite and Renewable Energy
- Types of alternative energy
- Advantages and disadvantages of renewable energy

The order of Units in the first term and revision topics thereafter, may change to allow for sharing of lab space and resources.

# Science Sets Y, Z Curriculum Map: Year 11

