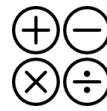


MATHS Set Z

Curriculum Map: Year 7



NUMBER
Addition, Subtraction,
Multiplication & Division.

- Students will study:
- Factors, multiples & primes
 - Square and cube numbers
 - Solve multi-step problems with all four operations
 - BIDMAS
 - Mental calculations and estimation
 - Reason from known facts

NUMBER
Fractions



- Students will study:
- Equivalent fractions and simplifying
 - Add and subtract any two fractions
 - Add & subtract mixed numbers
 - Multiply & divide fractions
 - Fraction of an amount
 - Read, write and understand thirds, quarters, fifths and tenths, including equivalent forms

AUTUMN TERM

NUMBER
Place Value



- Students will study:
- Numbers to 10,000,000
 - Powers of 10
 - Compare and order any integers
 - Round any integer
 - Negative numbers

October/November
Students will prepare for and sit the
Functional Skills Entry Level 1 Exam



SPRING TERM

STATISTICS

- Line graphs
- Dual bar charts
- Read and interpret pie charts
- Pie charts with percentages
- Draw pie charts
- The mean

FRACTIONS, DECIMALS & PERCENTAGES



- Equivalents
- Percentage of an amount problems
- Fractions as division

DECIMALS



- Place value
- Rounding
 - Add, Subtract, Multiply & Divide by integers
 - Multiply & Divide by 10, 100 & 1000
 - Multiply & Divide decimals in context.

ALGEBRA



- Function machines
- Form expressions
- Substitution
- Formulae
- Form equations
- Solve 2-step equations
- Find pairs of values
- Solve problems with two unknowns

RATIO



- Add or multiply?
- Ratio and fractions
- Scale drawings
- Scale factors
- Similar shapes
- Ratio problems
- Proportion problems
- Recipes

MEASUREMENT



Students will learn how to measure angles.

February/March
Students will prepare for and sit the
Functional Skills Entry Level 2 Exam or resit the Entry Level 1



Year 7 Set 1 students complete the KS3 curriculum and begin studying topics that will help prepare for their GCSE exam in Year 11.

Students will also be working towards passing their Pearson Edexcel Functional Skills Entry Level 3 exam.

NUMBER
Fractions



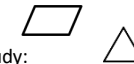
- Students will study:
- Negative numbers
 - Fraction of a number
 - Ratio
 - Decimals

MEASUREMENT



- Students will study:
- Conversion of metric units
 - Use and conversion of money

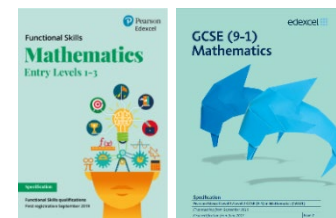
GEOMETRY



- Students will study:
- Perimeter and area of shapes
 - Angles
 - Nest of shapes
 - Angles in shapes

SUMMER TERM

May/June
Students will prepare for and sit the
Functional Skills Entry Level 3 Exam



MATHS Set Y

Curriculum Map: Year 7

ADDITION & SUBTRACTION

Students will learn to add and subtract two, 4-digit numbers with exchanging and use efficient estimating and checking strategies.



MEASUREMENT

Students will learn how to find the area and perimeter of regular shapes by counting squares.



MULTIPLICATION & DIVISION

Students will learn to multiply and divide using their multiplication tables and understand that multiplication and division are the inverse of each other. Students will study the 3, 6, 9, 7, 11 & 12 times table.



AUTUMN TERM

NUMBER Place value

Students will become confident with numbers up to 10,000 and will be able to partition, order, compare & round to the nearest 10, 100 & 1000.

October/November
Students will prepare for and sit the **Functional Skills Entry Level 1 Exam.**



NUMBER



Fractions

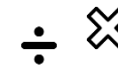
Students will understand the whole, mixed numbers and improper fractions. Students will also learn to add and subtract fractions and find equivalent fractions.

MEASUREMENT



Students will learn how to measure using kilometres and metres and be able to find the perimeter of rectangles and other polygons.

MULTIPLICATION & DIVISION



Students will continue to develop their understanding of multiplication and division and will begin to apply their knowledge to factors, multiplying and dividing by 10, 100 & 1000, and use informal written methods to multiply and divide 2-digit numbers by 1-digit numbers.

SPRING TERM

.00
↓

Decimals

Students will study tenths and hundredths as decimals and use this knowledge to divide a 1-digit number by 10.

SUMMER TERM

February/March
Students will prepare for and sit the **Functional Skills Entry Level 2 Exam or resit the Entry Level 1.**



MEASUREMENT



Students will study units of mass, capacity & temperature, money and time in real-life contexts.

GEOMETRY



Students will study 2-D shapes, symmetry and position and direction, including coordinates on a grid.



STATISTICS



Students will study bar graphs, line graphs, lists and tables and be able to interpret and extract information from these. Students will also learn to read scales to the nearest labelled division.

Year 7 Set 2 students complete the KS2 curriculum and work towards passing their Pearson Edexcel Functional Skills Entry Level 2 exam. Students will have 3 opportunities to sit this exam throughout the year. As preparation, students will initially sit the Functional Skills Entry Level 1 Exam. This will enable them to gain exam practise and allow us to assess areas of strength and areas for further growth.

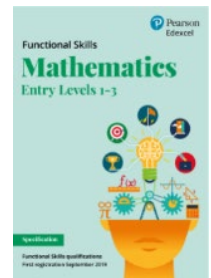
.00
↓

NUMBER

Decimals

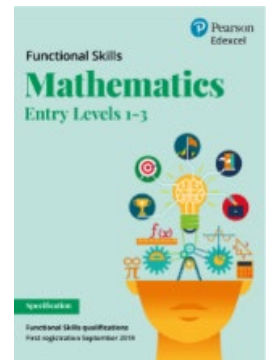
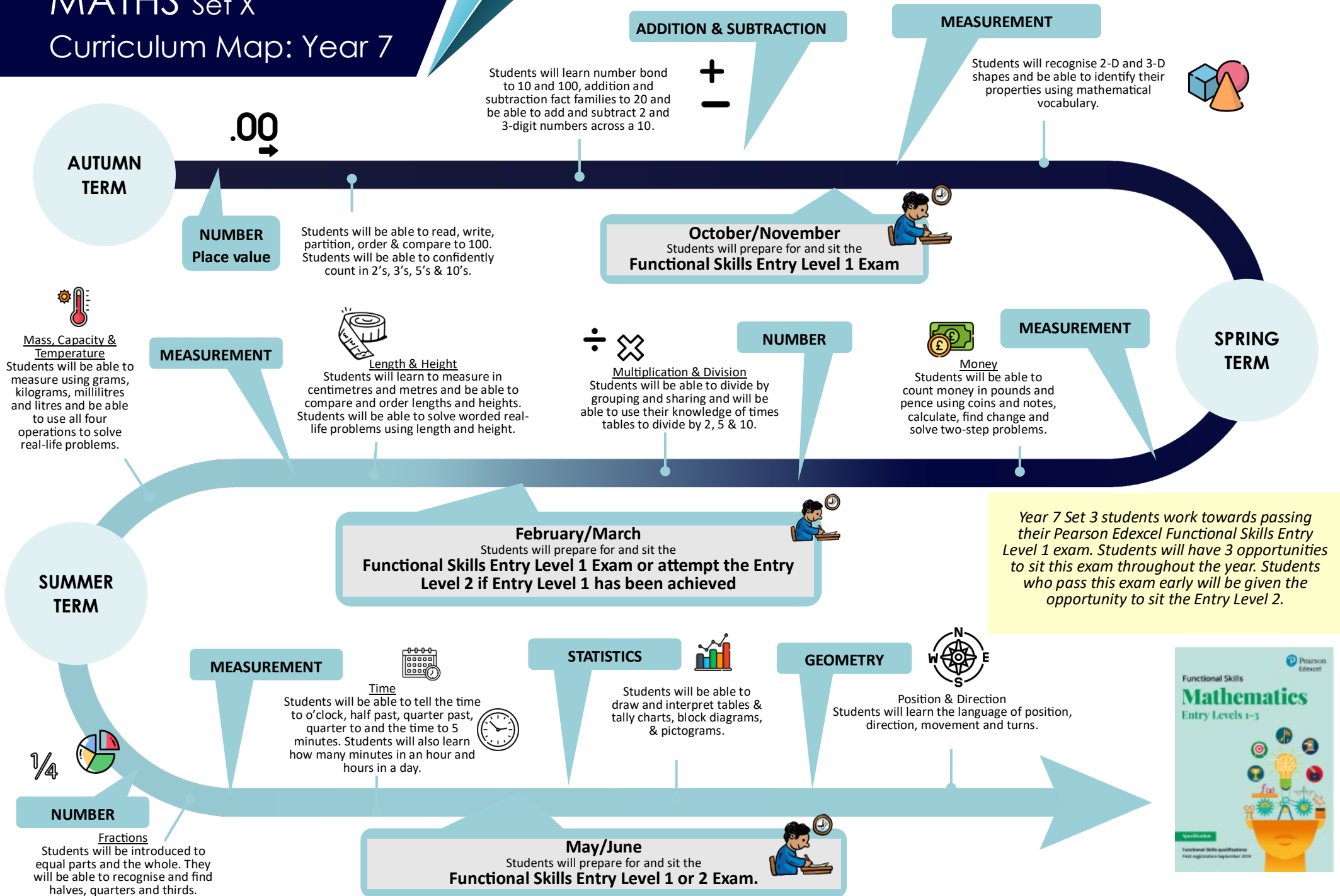
Students will partition, compare, order and round decimals to the nearest whole number. Students will also understand halves and quarters as decimals.

May/June
Students will prepare for and sit the **Functional Skills Entry Level 2 Exam.**



MATHS Set X

Curriculum Map: Year 7



MATHS Set w

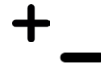
Curriculum Map: Year 7

AUTUMN TERM

NUMBER
Place value

Students will be able to read, write, partition, order & compare to 100. Students will be able to confidently count in 2's, 3's, 5's & 10's.

ADDITION & SUBTRACTION



Students will learn number bond to 10 and 100, addition and subtraction fact families to 20 and be able to add and subtract 2 and 3-digit numbers across a 10.

MEASUREMENT

Students will recognise 2-D and 3-D shapes and be able to identify their properties using mathematical vocabulary.



MEASUREMENT

Mass, Capacity & Temperature
Students will be able to measure using grams, kilograms, millilitres and litres and be able to use all four operations to solve real-life problems.



Length & Height

Students will learn to measure in centimetres and metres and be able to compare and order lengths and heights. Students will be able to solve worded real-life problems using length and height.



NUMBER



Multiplication & Division
Students will be able to divide by grouping and sharing and will be able to use their knowledge of times tables to divide by 2, 5 & 10.

MEASUREMENT



Money
Students will be able to count money in pounds and pence using coins and notes, calculate, find change and solve two-step problems.

SPRING TERM

SUMMER TERM

MEASUREMENT

Time
Students will be able to tell the time to o'clock, half past, quarter past, quarter to and the time to 5 minutes. Students will also learn how many minutes in an hour and hours in a day.

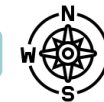


STATISTICS



Students will be able to draw and interpret tables & tally charts, block diagrams, & pictograms.

GEOMETRY



Position & Direction
Students will learn the language of position, direction, movement and turns.

NUMBER

Fractions
Students will be introduced to equal parts and the whole. They will be able to recognise and find halves, quarters and thirds.



May/June

Students will prepare for and sit the **Functional Skills Entry Level 1 or 2 Exam**



February/March
Students will prepare for and sit the **Functional Skills Entry Level 1 Exam or attempt the Entry Level 2 if Entry Level 1 has been achieved**



Year 7 Set 4 students work towards passing their Pearson Edexcel Functional Skills Entry Level 1 exam. Students will have 3 opportunities to sit this exam throughout the year.

