

MATHS Set Z

Curriculum Map: Year 8

$$\times \div - +$$

Addition, Subtraction, Multiplication & Division
Students will use all four operations to solve real-life worded problems. Students will study factors, multiples, primes, squares, cubes and roots and be able to apply this knowledge when solving BIDMAS problems.

Fractions
Students will be able to add, subtract, multiply and divide fractions and apply this to real-life worded problems.



NUMBER

Place Value
Students will become confident with positive and negative numbers to 10,000,000, finding powers of 10 and rounding.

AUTUMN TERM

October/November
Students will prepare for and sit the **Functional Skills Entry Level 1 Exam.**

Students will study place value within 1 and be able to multiply and divide integers and decimals by 10, 100 & 1000.

STATISTICS

Students will read and interpret & extract information from line graphs, bar charts and pie charts. Students will also study mean averages.

SPRING TERM

Year 8 Set 1 students complete the KS3 curriculum and begin studying topics that will help prepare for their GCSE exam in Year 11. Students will also be working towards passing their Pearson Edexcel Functional Skills Entry Level 3 exam.

FRACTIONS, DECIMALS & PERCENTAGES



Students will study fraction, decimal & percentage equivalents and be able to solve multi-step word problems.

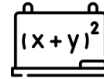
DECIMALS

Students will learn to convert units including kilograms and grams, kilometres and metres, millimetres and metres and millilitres and litres. Students will study units of time and be able to read the time from an analogue & digital clock, read clocks in 24 hour format and be able to calculate using timetables. Students will also embed their skills using money and decimal notation, expressing money correctly in writing pounds and pence.



ALGEBRA

Students will solve problems with function machines, formulae, equations and unknowns.



RATIO

Students will begin to understand ratios and make accurate decisions relating to ratios (add or multiply?) and solve real-life worded problems, including recipes.



GEOMETRY

Students will learn to measure and classify angles in triangles, quadrilaterals and other polygons and be able to draw shapes and nets accurately.



MEASUREMENT



Students will study area and perimeter of triangles and parallelograms.

SUMMER TERM

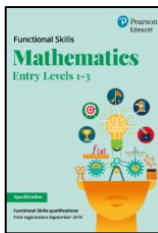
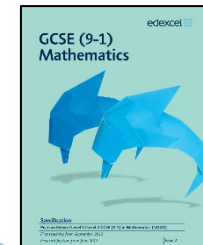
MEASUREMENT



NUMBER

Decimals
Students will use known number facts to add, subtract, multiply and divide decimals using efficient strategies across 1.

May/June
Students will prepare for and sit the **Functional Skills Entry Level 3 Exam**



MATHS Set Y

Curriculum Map: Year 8

ADDITION & SUBTRACTION

Students will learn to add and subtract two, 4-digit numbers with exchanging and use efficient estimating and checking strategies.



MEASUREMENT

Students will learn how to find the area and perimeter of regular shapes by counting squares.



MULTIPLICATION & DIVISION



Students will learn to multiply and divide using their multiplication tables and understand that multiplication and division are the inverse of each other. Students will study the 3, 6, 9, 7, 11 & 12 times table.

AUTUMN TERM

NUMBER Place value

Students will become confident with numbers up to 10,000 and will be able to partition, order, compare & round to the nearest 10, 100 & 1000.

October/November
Students will prepare for and sit the **Functional Skills Entry Level 2 Exam**

MULTIPLICATION & DIVISION

SPRING TERM



Decimals

Students will study tenths and hundredths as decimals and use this knowledge to divide a 1-digit number by 10.

NUMBER



Fractions

Students will understand the whole, mixed numbers and improper fractions. Students will also learn to add and subtract fractions and find equivalent fractions.

MEASUREMENT



Students will learn how to measure using kilometres and metres and be able to find the perimeter of rectangles and other polygons.

Students will continue to develop their understanding of multiplication and division and will begin to apply their knowledge to factors, multiplying and dividing by 10, 100 & 1000, and use informal written methods to multiply and divide 2-digit numbers by 1-digit numbers.



SUMMER TERM

February/March
Students will prepare for and sit the **Functional Skills Entry Level 3 Exam or resit the Entry Level 2**

MEASUREMENT



Students will study units of mass, capacity & temperature, money and time in real-life contexts.

GEOMETRY



Students will study 2-D shapes, symmetry and position and direction, including coordinates on a grid.

STATISTICS



Students will study bar graphs, line graphs, lists and tables and be able to interpret and extract information from these. Students will also learn to read scales to the nearest labelled division.

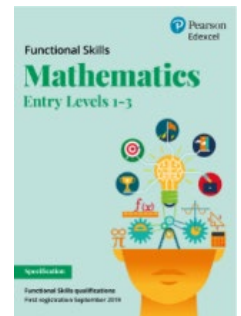
NUMBER

Decimals

Students will partition, compare, order and round decimals To the nearest whole number. Students will also understand halves and quarters as decimals.

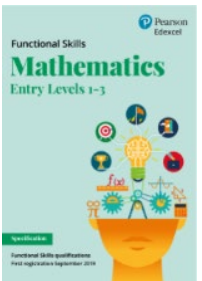
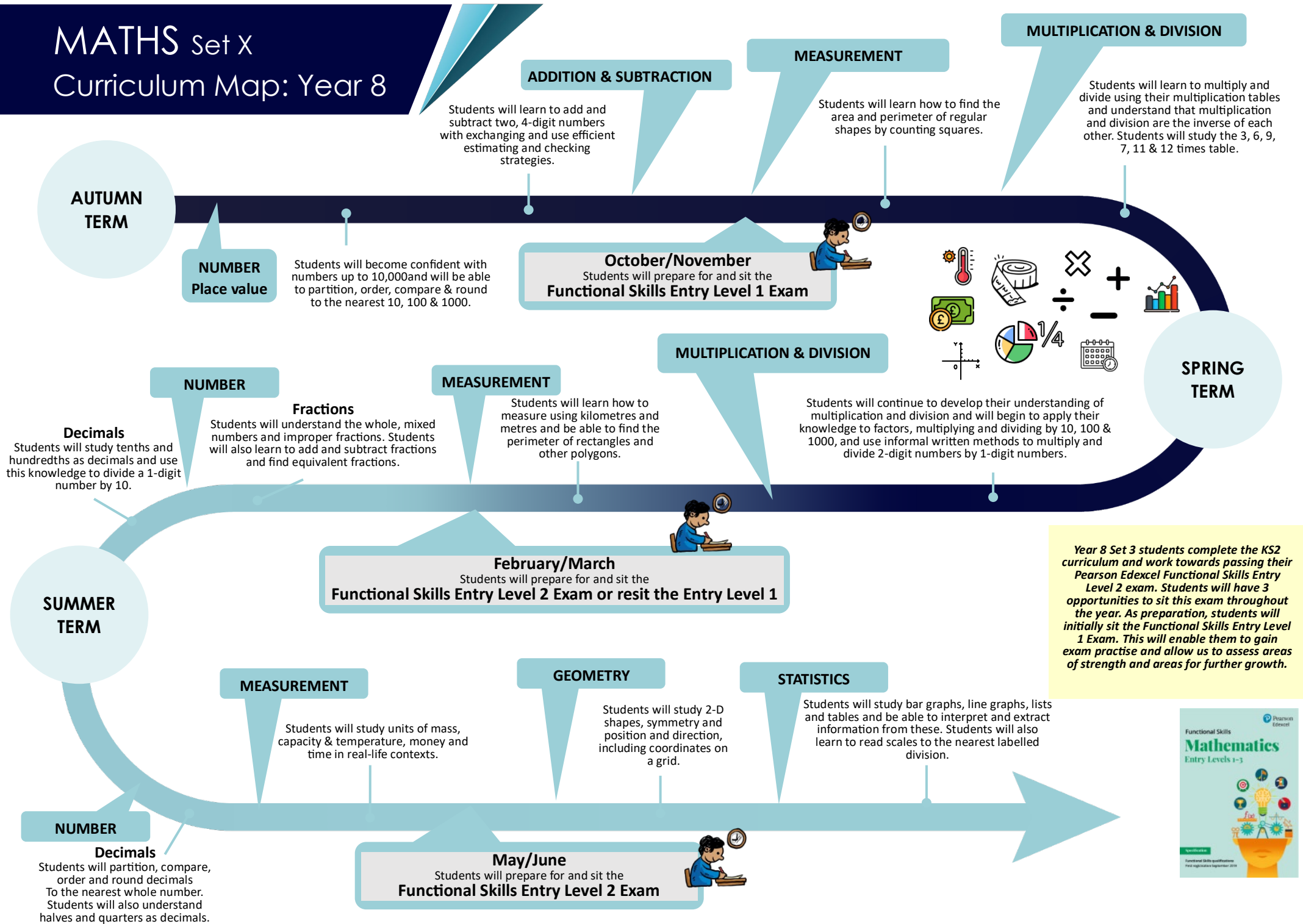
May/June
Students will prepare for and sit the **Functional Skills Entry Level 3 Exam.**

Year 8 Set 2 students work towards passing their Pearson Edexcel Functional Skills Entry Level 2/3 exam. Students will have 3 opportunities to sit this exam throughout the year. This will enable them to gain exam practise and allow us to assess areas of strength and areas for further growth.



MATHS Set X

Curriculum Map: Year 8



MATHS Set W

Curriculum Map: Year 8

