

MATHS Set Z

Curriculum Map: Year 9

Students will become fluent in the following number topics:

- Adding & subtracting up to 3-digit numbers with exchanging.
- Multiplying 2-digit by 2-digit numbers.
- Diving 3-digit by 1-digit and expressing remainders.
- Basic fraction work, including all four operations, finding equivalents & converting improper fractions to mixed numbers.
- Fractions, decimals and percentages.
- Factors, multiples & primes including HCF & LCM.



Students will learn to convert metric units, measure and draw angles and identify properties of 2D shapes.

Students will learn to draw and interpret pictograms, bar graphs, line graphs and pie charts and be able to find averages.

AUTUMN TERM

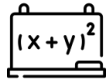
NUMBER

October/November
Students will prepare for and sit the **Functional Skills Entry Level 3 Exam or Topic Test**

MEASUREMENT

STATISTICS

ALGEBRA



Students will study collecting terms, multiplying terms, expanding brackets and solving linear equations.

FRACTIONS



Students will continue to consolidate their learning on adding, subtracting, multiplying and dividing fractions, including mixed numbers and improper fractions.

MEASUREMENT

Students will continue to recognise, name, sort and describe properties of 2D and 3D shapes. Students will also study linear and rotational symmetry.

NUMBER

Students will continue to study numbers and solve problems using all four operations, including negative numbers.

SPRING TERM

SUMMER TERM

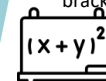
Students will continue to study numbers and solve problems using all four operations, including negative numbers.

MEASUREMENT



Students will learn to convert between metric and imperial units of measure and be able to use a varied vocabulary to describe different measures relating to capacity, length, weight and time.

ALGEBRA



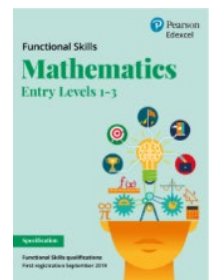
Students will continue to embed their knowledge of collecting terms, multiplying terms, expanding brackets and solving linear equations.

NUMBER

May/June
Students will prepare for and sit the **Functional Skills Entry Level 3 Exam or Topic Test**

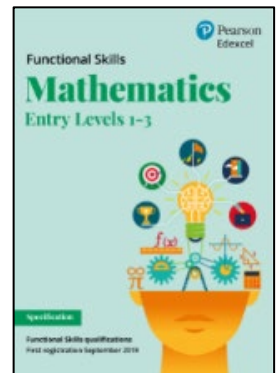
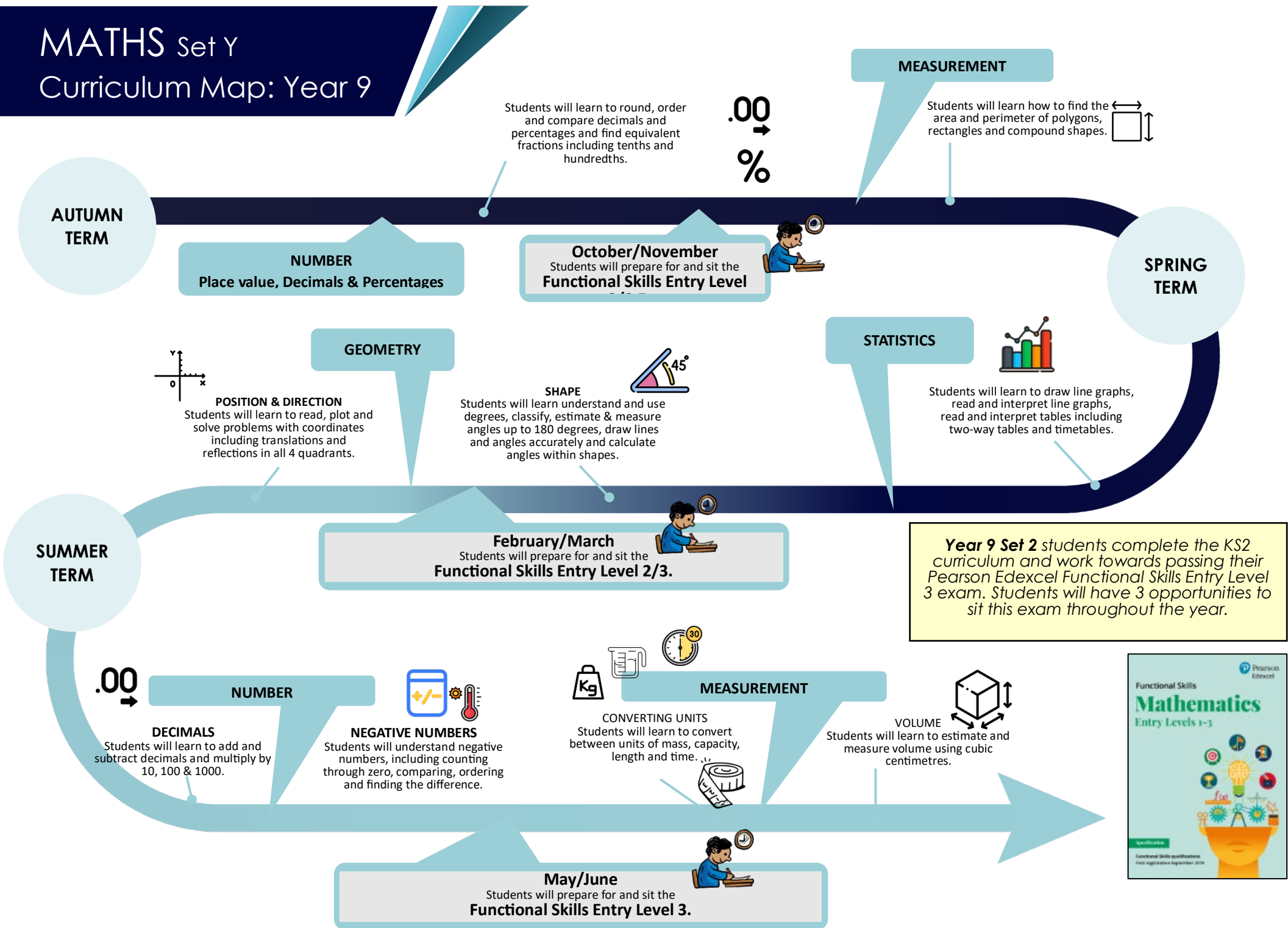
Year 9 Set 1 students complete the KS3 curriculum and begin preparing for their GCSE.

Some students will also be working towards passing their Pearson Edexcel Functional Skills Entry Level 3 exam (if they have not already done so.)

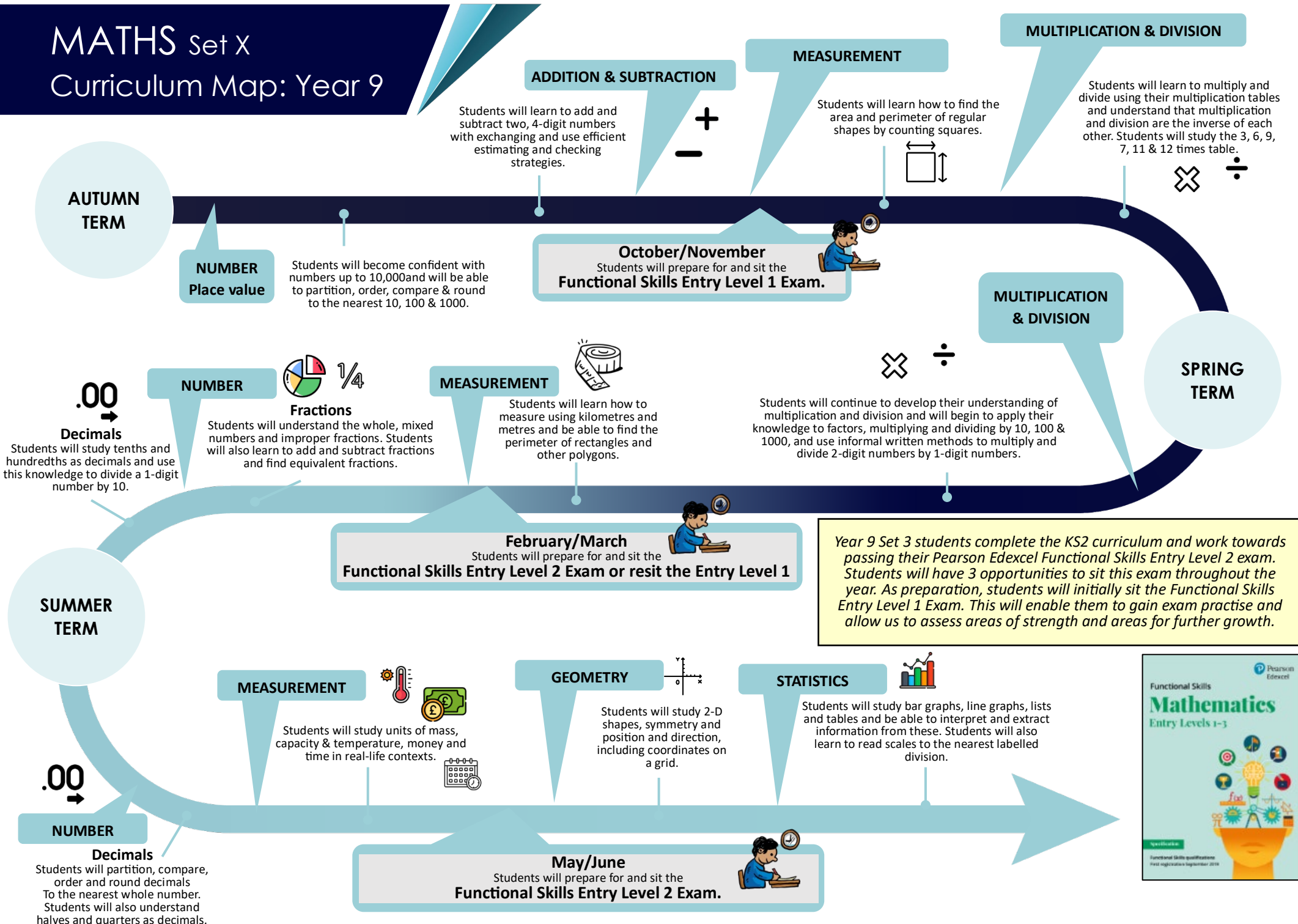


MATHS Set Y

Curriculum Map: Year 9



MATHS Set X Curriculum Map: Year 9



MATHS Set W Curriculum Map: Year 9

ADDITION & SUBTRACTION

Students will learn to add and subtract two, 4-digit numbers with exchanging and use efficient estimating and checking strategies.



MEASUREMENT

Students will learn how to find the area and perimeter of regular shapes by counting squares.



MULTIPLICATION & DIVISION

Students will learn to multiply and divide using their multiplication tables and understand that multiplication and division are the inverse of each other. Students will study the 3, 6, 9, 7, 11 & 12 times table.



AUTUMN TERM

NUMBER Place value

Students will become confident with numbers up to 10,000 and will be able to partition, order, compare & round to the nearest 10, 100 & 1000.

October/November
Students will prepare for and sit the **Functional Skills Entry Level 1 Exam**

MULTIPLICATION & DIVISION



SPRING TERM

NUMBER



Fractions

Students will understand the whole, mixed numbers and improper fractions. Students will also learn to add and subtract fractions and find equivalent fractions.

MEASUREMENT



Students will learn how to measure using kilometres and metres and be able to find the perimeter of rectangles and other polygons.

Students will continue to develop their understanding of multiplication and division and will begin to apply their knowledge to factors, multiplying and dividing by 10, 100 & 1000, and use informal written methods to multiply and divide 2-digit numbers by 1-digit numbers.

.00

Decimals

Students will study tenths and hundredths as decimals and use this knowledge to divide a 1-digit number by 10.

SUMMER TERM

MEASUREMENT



Students will study units of mass, capacity & temperature, money and time in real-life contexts.

GEOMETRY



Students will study 2-D shapes, symmetry and position and direction, including coordinates on a grid.

STATISTICS



Students will study bar graphs, line graphs, lists and tables and be able to interpret and extract information from these. Students will also learn to read scales to the nearest labelled division.

.00

NUMBER

Decimals

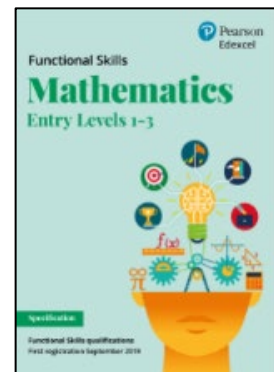
Students will partition, compare, order and round decimals to the nearest whole number. Students will also understand halves and quarters as decimals.

February/March
Students will prepare for and sit the **Functional Skills Entry Level 2 Exam or resit the Entry Level 1**

Year 9 Set 4 students complete the KS2 curriculum and work towards passing their Pearson Edexcel Functional Skills Entry Level 2 exam. Students will have 3 opportunities to sit this exam throughout the year. As preparation, students will initially sit the Functional Skills Entry Level 1 Exam. This will enable them to gain exam practise and allow us to assess areas of strength and areas for further growth.

May/June

Students will prepare for and sit the **Functional Skills Entry Level 2 Exam**



MATHS Set V Curriculum Map: Year 9

