

# Glebe School NEWSLETTER

Autumn Term #6 - 19/12/24



## Thurs 19<sup>th</sup> Dec - End of Autumn Term

School will finish at the usual time of 3.15pm

## CHRISTMAS HOLIDAYS



Friday 20<sup>th</sup> Dec - Monday 6<sup>th</sup> Jan

## Tues 7<sup>th</sup> Jan - Start of Spring Term

School will start again for students at 9am on Tues 7<sup>th</sup> January



## Thurs 16<sup>th</sup> Jan


### YEAR 11 PARENTS' EVENING


This is an **online** event

Booking is now open and will close at midnight on Tuesday 7<sup>th</sup> January

[CLICK HERE](#) to book





 Families eligible to receive support under the **Government's Household Support Grant** will receive supermarket vouchers for the holidays in the next few days (on or around the 19<sup>th</sup>). The amount is set by the Local Authority. **These will be emailed to the primary email address held on record by the school.**


 A reminder that all parents/carers will receive end of term mailing with relevant information, including your child's Autumn Term School Report.




## ECHO READING

 Encourage your child to read aloud with expression and fluency

 Read a short section of text aloud, then have your child repeat it after you, trying to echo/mimic your expression and pacing.

 This helps them understand how punctuation, such as commas or exclamation marks, can change the way sentences are read.

 Focus on using expression, tone, and pacing, as this will improve their fluency and understanding of the text.



## MESSAGE FROM THE HEADTEACHER

Dear Parents/Carers,

Our festive events in the lead up to the Christmas break are always a wonderful way for us to sign off for the holidays after a long autumn term. The Christmas concert, mini market stalls and year group trips always make the last few weeks that bit more magical for the pupils.

As is always the case, the entire autumn term has been packed with events and goings on. Last month year 11 pupils sat their mock exams, the school has been reaccredited with its online safety award and there have been some wonderful school trips, including to the frameless exhibition in Marble Arch and the Young Scientist Centre at the Royal Institution. On top of this, the clubs we offer such as Skateboarding and Fencing, as well as new additions like Tap Dancing and Capoeira, continue to be popular.

One of our school values is Collaboration; we place great value on working together as it exposes us to meeting new people and ideas, which in turn improves progress as well as making our community stronger. On this theme, we have started new collaborations with the charities Football Beyond Borders and the Crystal Palace Foundation, both of whom are helping to teach many of our pupils about the importance of life skills such as resilience, hard work and commitment, as well as looking at careers within sport.

The rich variety in our curriculum offer, along with the extraordinary care and dedication from Glebe staff is certainly what engages our pupils and makes them want to attend school. This is reflected in our attendance figures, which stand at 94% (year to date) and is considerably higher than all other Bromley special schools, as well special schools nationally. Likewise, our progress outcomes show that Glebe is in the top 2% nationally of special schools that offer KS4 qualifications. This is an incredible achievement and one we should all be proud of.

Earlier this term, the second annual Bromley SEND Stars Awards was held. This is a celebration in recognition of the achievement of families, children and young people with SEND as well as the community and the professionals that support them. I was delighted to be in attendance and to see Glebe pupils and families winning awards. It is so good to see that the Local Authority have set up an event that is bespoke to young people with SEND, and long may it continue.

As mentioned earlier, the school has once again been awarded with the eSafety mark. This is an important award given to schools that are able to demonstrate good practice in their online safety procedures and I must thank Mr. Hamblin for his efforts in leading this successfully. This is also Mr Hamblin's last term at Glebe as he leaves us for a new challenge, taking up an assistant headteacher role elsewhere. On behalf of the whole school community, I thank Mr Hamblin for his years of service and dedication to the school.

As usual, I must also thank all the Glebe staff for their commitment and hard work once again this term. I am blessed as the Headteacher to work with such an incredible team of talented and hardworking colleagues and I am sure you will join me in wishing them all a much deserved happy Christmas.

I would also like to thank you again for the unwavering support you continue to give the school; emails, surveys, and many a time, an informal chat at the gates. On behalf of all the staff, I want you to know how much this is appreciated.

Finally, please remember that pupils return back to school on Tuesday 7<sup>th</sup> January.

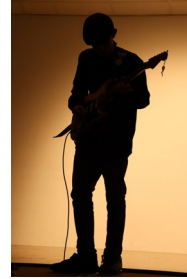
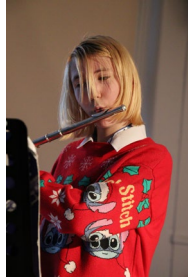
Merry Christmas

Mr Travis



## NEWS HEADLINES

🌿 Our Christmas concert was a smaller affair this year - an intimate performance of carols and dance - yet as always the Christmas spirit was strong! It is wonderful to see those who take part throw themselves into performing with such abandon, and they never fail to support each other through the jingle and the bells.



🌿 A chance to relax and a fantastic finish to the term, our now annual entire school Christmas trips took place this week - everyone (including staff!) enjoyed themselves. The trips ranged from the theatre to museums to a virtual reality experience!

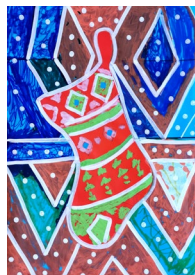
🌿 A huge thank you to the PTA, whose fundraising efforts meant tap dance shoes for everyone in our new Tap Club! The club is going brilliantly and students who attend are tippity tapping their way through new techniques on their way to fabulous musical numbers!



Malone



Audrey



Euan

🌿 The winners of this years' Christmas Card competition are Malone H (y7), Audrey S (y8) and Euan McF (y9)! The cards are printed and sent to our neighbours and local community, as well as being sold to staff. Well done!

# YEAR 7



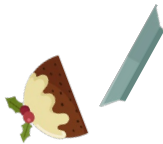
Year 7 recently went on a trip with our English department to explore the Narnia Trail at Nymans stately home, linked to their study of *The Lion, the Witch and the Wardrobe* book this term.



Students followed a Narnia-themed trail, collecting clues along the way and then walked through the house's themed rooms which included the Witch's sleigh, Mr Tumnus' cave and the Professor's sitting room! All the students were beautifully behaved and had a wonderful time.



The Jack Petchey Award is given in recognition of hard work, motivation and going above and beyond. Each student receives £300 from the Jack Petchey foundation, to be spent in any area of the curriculum that they want to support. Congratulations!



## SEPTEMBER



Gabes, y10

An exceptional role model to his peers - always polite, friendly and kind to everyone

## OCTOBER



Sarah, KS5

Making huge strides in her communication, with increasing confidence around the school

## NOVEMBER



Ali, y11

An ambassador for the school, promoting the student voice as an elected Bromley Youth Councillor

# YEAR 8

We have made it to the end of term, and we hope you are all looking forward to the Christmas break. A big congratulations goes out to the following students, who received a Student of the Week award this half term: Kevin, Finley, Jojo, Louis, Keithen and Leland; for modelling a range of our Glebe values.

Year 8 students also enjoyed a fantastic trip to Selhurst Park, with a guided tour and meeting some academy players (see more info further on in the newsletter).

To end the year on a festive note, students enjoyed attending the mini Christmas Market and wearing their Christmas jumpers. The Year 8 team wish you a very happy Christmas and hope you have a restful break. We look forward to seeing you in 2025!



The Glebe PTA organised the Christmas Wish Room again this year. Thank you so much for your generous donations, which allow our students to purchase presents for loved ones where they may not otherwise have been able to. It was so popular that the PTA joined us again for our Christmas Market the week after!



## YEAR 9

Firstly we would like to say well done and congratulations to year 9 for a very positive autumn term. It is very pleasing to see as towards the end of the spring term they will be selecting their option subjects for KS4 (more information to follow next term).

Year 9 celebrated the festive season with a Cuban inspired reward day. Musicians came into school and students explored Cuban dance and food. All this supported a topic they have been looking at in their MFL lessons.

We would like to wish all the year 9s and their families a happy a restful festive period and look forward to seeing everyone back in the new year.



Our Christmas Market took place again this year, so popular that we had to hold it over two mornings! All year groups contributed a stall, where they made and sold various festive treats - after a shift manning their own stall, students were able to browse all the other offerings too.



## YEAR 10

Year 10 students have had a fantastic Autumn term, all should be proud of their resilience and hard work. It is a pleasure seeing everyone growing in confidence as they make progress in their option subjects. Well done all!



Congratulations to Evie W and Max L for their Student of the Week awards, very well deserved.

A special mention to Ethan O, who volunteered to participate in the E-Safety event alongside other students from different year groups. In his words, "it was very interesting and I enjoyed sharing advice to stay safe online with others".



Year 10 girls showed their fantastic football skills at the SLSL Girls Football Tournament. Shoutout to Charley C for scoring 8 goals (yes, 8!) and Coco B for her impressive defence on the pitch. Excellent job!

All students also really enjoyed their cross curricular trips. They enjoyed their activities and spent quality time with each other, a very positive way to end the Autumn term. Happy holidays all!



For the past 10 weeks our year 8 students have been participating in a project called 'Inspire' with the Palace For Life Foundation. This educational project for young people aims to use the appeal of Crystal Palace football club to inspire young people. Throughout the project students have covered various themes and topics to develop their skills and confidence. They students had the opportunity to visit the Crystal Palace football stadium at the end of the project!

Curiosity

Compassion

Collaboration

Celebration


Courage

# YEAR 11

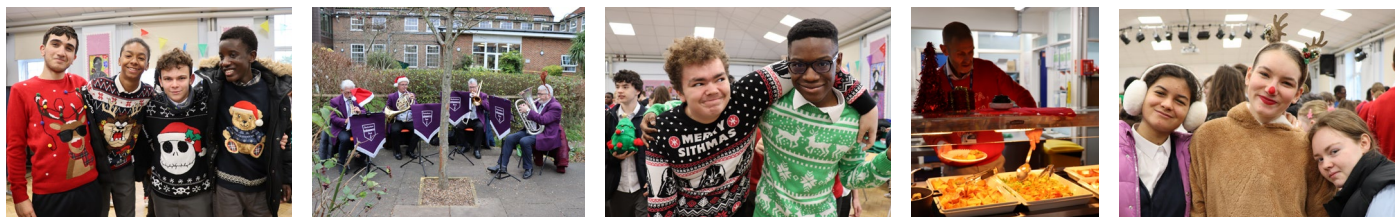
It has been truly rewarding to witness the Year 11s' progress this term. One of the standout moments was the maturity they displayed during the mock exams. Year 11 are increasingly showing that they're ready for life beyond Glebe, particularly with their weekly college attendance on Fridays. To celebrate their hard work, the students are looking forward to a well-deserved trip to the Immersive Gamebox, and I'm sure they'll have plenty to share after the experience.

From myself, it has been a privilege to serve as your child's Head of Year since Year 8. Watching the students grow, overcome challenges and achieve so much has been genuinely inspiring. I wish them all the very best as they move forward into their bright futures and extend my best wishes to Miss Dargavel as she takes on the role of Head of Year.

Mr Hamblin

 Christmas jumper day saw a multitude of festive cheer, not to mention sequins, tinsel, reindeer and the odd grinch or santa stormtrooper! Coinciding with school Christmas dinner day, where we found Mr Travis personally dishing up dinners, the sea of seasonal jumpers gave the school an extra festive feeling.

We also welcomed back Mr Duncan's annual performance with his brass band (with thanks to Beckenham Concert Band) which made our lunch break all the more delightful!

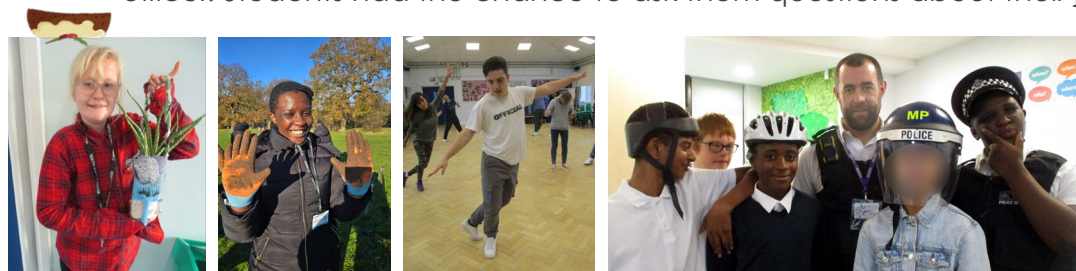


## PROVISION

In KS5 options this term, Art Award Dance students have been practicing for their performance in the Christmas Concert, whilst King's Trust students sold their upcycled planters from their 'Sustainability' unit.

Speaking of sustainability, Lower Provision students learnt about the environmental impact of climate change whilst planting their own tree in Ashburton Park with Trees for Cities.

Glebe's school police liaison, PC Brenson, and his colleague Lucy came to talk with both KS3 and KS5 about their jobs; his responsibilities and the skills he needs in order to be a police officer. Students had the chance to ask them questions about their jobs and how to



become a police officer. We all had a wonderful time have been inspired to look into careers within the police force.

Curiosity

Compassion

Collaboration

Celebration

Courage